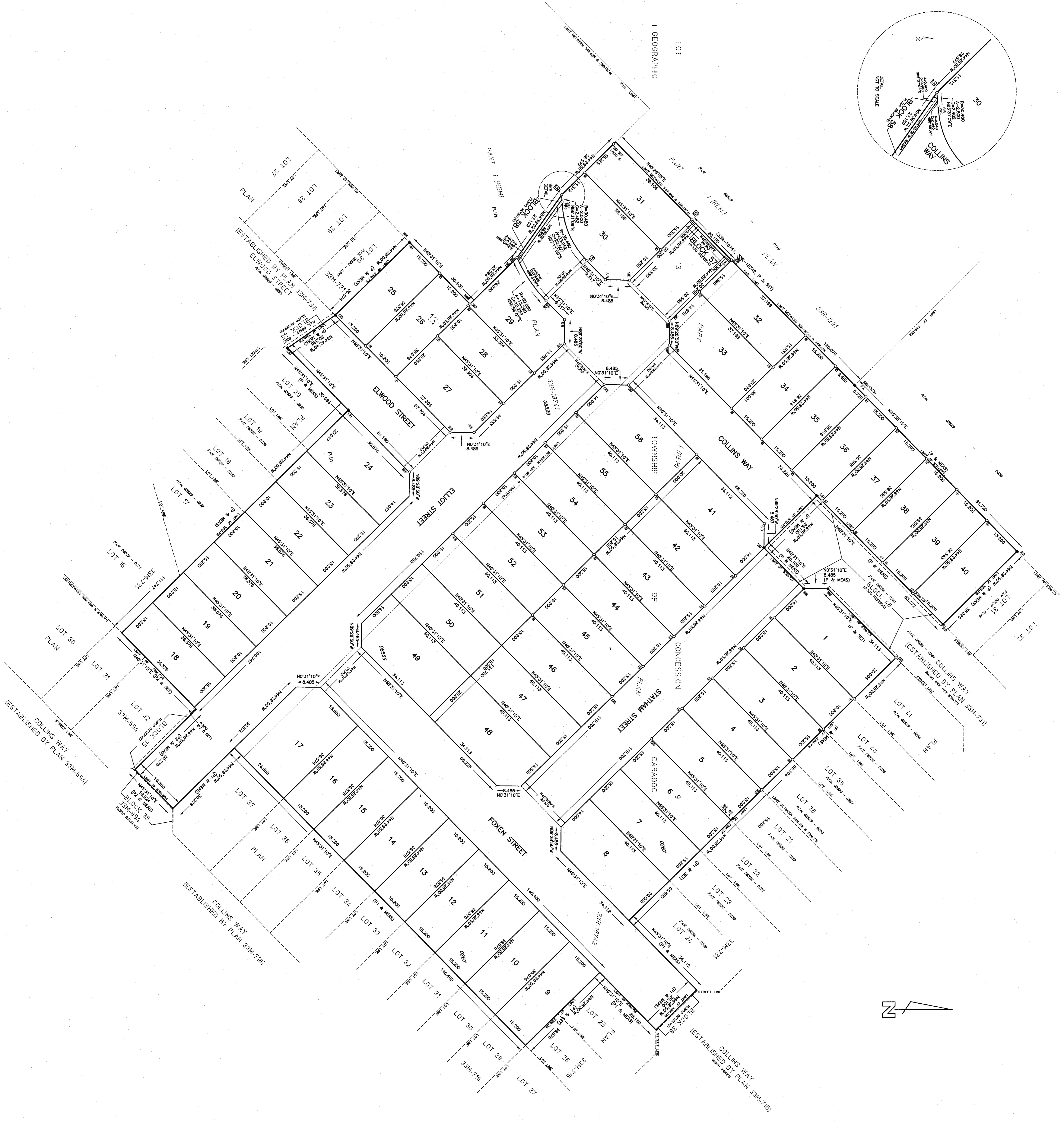
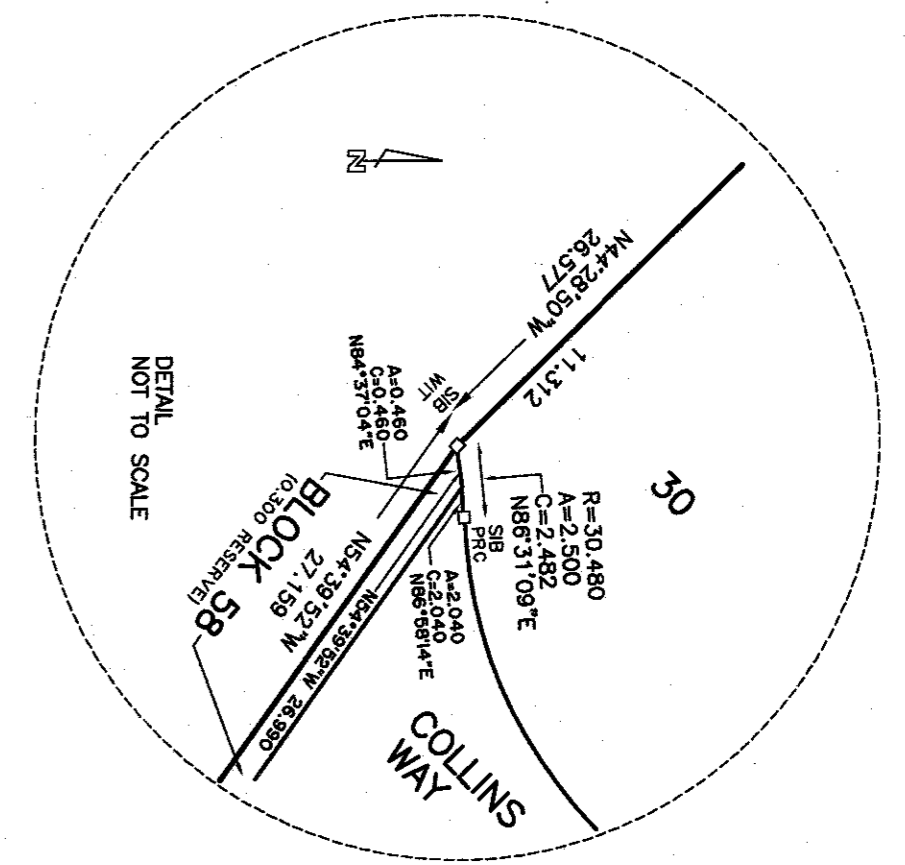


REGISTER THAT THIS PLAN IS REGISTERED IN THE LAND REGISTRY OFFICE FOR THE LAND TITLES DIVISION OF ONTARIO, REGISTRY OFFICE FOR THE LAND TITLES DIVISION OF ONTARIO, 2019, AND ENTERED IN THE PUBLIC REGISTER FOR PLAN 33M-03527 - 0287 AND THE REQUIRED CONVEYANCES ARE REGISTERED AS PLAN 33M-03527 - 0287.

PERMISSION FOR THE LAND REGISTRY FOR THE LAND TITLES DIVISION OF ONTARIO (MXX)

THIS PLAN COMPRISES PART OF PLAN 33M-03527 - 0287



PLAN OF SUBDIVISION
 LOT 13, CONCESSION 9
 (GEOGRAPHIC TOWNSHIP OF CARADOC)
 MUNICIPALITY OF STRATHROY - CARADOC
 COUNTY OF WINDSOR
 SCALE 1 : 500
 M.T.E. LTD.

NOTES
 1) SEE DRAWINGS STANDARD FROM BAR.
 2) SEE DRAWINGS STANDARD FROM BAR.
 3) SEE DRAWINGS STANDARD FROM BAR.
 4) SEE DRAWINGS STANDARD FROM BAR.
 5) SEE DRAWINGS STANDARD FROM BAR.
 6) SEE DRAWINGS STANDARD FROM BAR.
 7) SEE DRAWINGS STANDARD FROM BAR.
 8) SEE DRAWINGS STANDARD FROM BAR.
 9) SEE DRAWINGS STANDARD FROM BAR.
 10) SEE DRAWINGS STANDARD FROM BAR.
 11) SEE DRAWINGS STANDARD FROM BAR.
 12) SEE DRAWINGS STANDARD FROM BAR.
 13) SEE DRAWINGS STANDARD FROM BAR.
 14) SEE DRAWINGS STANDARD FROM BAR.
 15) SEE DRAWINGS STANDARD FROM BAR.
 16) SEE DRAWINGS STANDARD FROM BAR.
 17) SEE DRAWINGS STANDARD FROM BAR.
 18) SEE DRAWINGS STANDARD FROM BAR.
 19) SEE DRAWINGS STANDARD FROM BAR.
 20) SEE DRAWINGS STANDARD FROM BAR.
 21) SEE DRAWINGS STANDARD FROM BAR.
 22) SEE DRAWINGS STANDARD FROM BAR.
 23) SEE DRAWINGS STANDARD FROM BAR.
 24) SEE DRAWINGS STANDARD FROM BAR.
 25) SEE DRAWINGS STANDARD FROM BAR.
 26) SEE DRAWINGS STANDARD FROM BAR.
 27) SEE DRAWINGS STANDARD FROM BAR.
 28) SEE DRAWINGS STANDARD FROM BAR.
 29) SEE DRAWINGS STANDARD FROM BAR.
 30) SEE DRAWINGS STANDARD FROM BAR.
 31) SEE DRAWINGS STANDARD FROM BAR.
 32) SEE DRAWINGS STANDARD FROM BAR.
 33) SEE DRAWINGS STANDARD FROM BAR.
 34) SEE DRAWINGS STANDARD FROM BAR.
 35) SEE DRAWINGS STANDARD FROM BAR.
 36) SEE DRAWINGS STANDARD FROM BAR.
 37) SEE DRAWINGS STANDARD FROM BAR.
 38) SEE DRAWINGS STANDARD FROM BAR.
 39) SEE DRAWINGS STANDARD FROM BAR.
 40) SEE DRAWINGS STANDARD FROM BAR.
 41) SEE DRAWINGS STANDARD FROM BAR.
 42) SEE DRAWINGS STANDARD FROM BAR.
 43) SEE DRAWINGS STANDARD FROM BAR.
 44) SEE DRAWINGS STANDARD FROM BAR.
 45) SEE DRAWINGS STANDARD FROM BAR.
 46) SEE DRAWINGS STANDARD FROM BAR.
 47) SEE DRAWINGS STANDARD FROM BAR.
 48) SEE DRAWINGS STANDARD FROM BAR.
 49) SEE DRAWINGS STANDARD FROM BAR.
 50) SEE DRAWINGS STANDARD FROM BAR.
 51) SEE DRAWINGS STANDARD FROM BAR.
 52) SEE DRAWINGS STANDARD FROM BAR.
 53) SEE DRAWINGS STANDARD FROM BAR.
 54) SEE DRAWINGS STANDARD FROM BAR.
 55) SEE DRAWINGS STANDARD FROM BAR.
 56) SEE DRAWINGS STANDARD FROM BAR.

MONUMENT NOTE
 FOUND MONUMENTS ARE THE UNLESS NOTED OTHERWISE

OWNER'S CERTIFICATE
 1) I HAVE THE AUTHORITY TO SIGN THE CORPORATION'S INSTRUMENT.
 2) I HAVE THE AUTHORITY TO SIGN THE CORPORATION'S INSTRUMENT.
 3) I HAVE THE AUTHORITY TO SIGN THE CORPORATION'S INSTRUMENT.
 4) I HAVE THE AUTHORITY TO SIGN THE CORPORATION'S INSTRUMENT.
 5) I HAVE THE AUTHORITY TO SIGN THE CORPORATION'S INSTRUMENT.
 6) I HAVE THE AUTHORITY TO SIGN THE CORPORATION'S INSTRUMENT.
 7) I HAVE THE AUTHORITY TO SIGN THE CORPORATION'S INSTRUMENT.
 8) I HAVE THE AUTHORITY TO SIGN THE CORPORATION'S INSTRUMENT.
 9) I HAVE THE AUTHORITY TO SIGN THE CORPORATION'S INSTRUMENT.
 10) I HAVE THE AUTHORITY TO SIGN THE CORPORATION'S INSTRUMENT.
 11) I HAVE THE AUTHORITY TO SIGN THE CORPORATION'S INSTRUMENT.
 12) I HAVE THE AUTHORITY TO SIGN THE CORPORATION'S INSTRUMENT.
 13) I HAVE THE AUTHORITY TO SIGN THE CORPORATION'S INSTRUMENT.
 14) I HAVE THE AUTHORITY TO SIGN THE CORPORATION'S INSTRUMENT.
 15) I HAVE THE AUTHORITY TO SIGN THE CORPORATION'S INSTRUMENT.
 16) I HAVE THE AUTHORITY TO SIGN THE CORPORATION'S INSTRUMENT.
 17) I HAVE THE AUTHORITY TO SIGN THE CORPORATION'S INSTRUMENT.
 18) I HAVE THE AUTHORITY TO SIGN THE CORPORATION'S INSTRUMENT.
 19) I HAVE THE AUTHORITY TO SIGN THE CORPORATION'S INSTRUMENT.
 20) I HAVE THE AUTHORITY TO SIGN THE CORPORATION'S INSTRUMENT.
 21) I HAVE THE AUTHORITY TO SIGN THE CORPORATION'S INSTRUMENT.
 22) I HAVE THE AUTHORITY TO SIGN THE CORPORATION'S INSTRUMENT.
 23) I HAVE THE AUTHORITY TO SIGN THE CORPORATION'S INSTRUMENT.
 24) I HAVE THE AUTHORITY TO SIGN THE CORPORATION'S INSTRUMENT.
 25) I HAVE THE AUTHORITY TO SIGN THE CORPORATION'S INSTRUMENT.
 26) I HAVE THE AUTHORITY TO SIGN THE CORPORATION'S INSTRUMENT.
 27) I HAVE THE AUTHORITY TO SIGN THE CORPORATION'S INSTRUMENT.
 28) I HAVE THE AUTHORITY TO SIGN THE CORPORATION'S INSTRUMENT.
 29) I HAVE THE AUTHORITY TO SIGN THE CORPORATION'S INSTRUMENT.
 30) I HAVE THE AUTHORITY TO SIGN THE CORPORATION'S INSTRUMENT.
 31) I HAVE THE AUTHORITY TO SIGN THE CORPORATION'S INSTRUMENT.
 32) I HAVE THE AUTHORITY TO SIGN THE CORPORATION'S INSTRUMENT.
 33) I HAVE THE AUTHORITY TO SIGN THE CORPORATION'S INSTRUMENT.
 34) I HAVE THE AUTHORITY TO SIGN THE CORPORATION'S INSTRUMENT.
 35) I HAVE THE AUTHORITY TO SIGN THE CORPORATION'S INSTRUMENT.
 36) I HAVE THE AUTHORITY TO SIGN THE CORPORATION'S INSTRUMENT.
 37) I HAVE THE AUTHORITY TO SIGN THE CORPORATION'S INSTRUMENT.
 38) I HAVE THE AUTHORITY TO SIGN THE CORPORATION'S INSTRUMENT.
 39) I HAVE THE AUTHORITY TO SIGN THE CORPORATION'S INSTRUMENT.
 40) I HAVE THE AUTHORITY TO SIGN THE CORPORATION'S INSTRUMENT.
 41) I HAVE THE AUTHORITY TO SIGN THE CORPORATION'S INSTRUMENT.
 42) I HAVE THE AUTHORITY TO SIGN THE CORPORATION'S INSTRUMENT.
 43) I HAVE THE AUTHORITY TO SIGN THE CORPORATION'S INSTRUMENT.
 44) I HAVE THE AUTHORITY TO SIGN THE CORPORATION'S INSTRUMENT.
 45) I HAVE THE AUTHORITY TO SIGN THE CORPORATION'S INSTRUMENT.
 46) I HAVE THE AUTHORITY TO SIGN THE CORPORATION'S INSTRUMENT.
 47) I HAVE THE AUTHORITY TO SIGN THE CORPORATION'S INSTRUMENT.
 48) I HAVE THE AUTHORITY TO SIGN THE CORPORATION'S INSTRUMENT.
 49) I HAVE THE AUTHORITY TO SIGN THE CORPORATION'S INSTRUMENT.
 50) I HAVE THE AUTHORITY TO SIGN THE CORPORATION'S INSTRUMENT.
 51) I HAVE THE AUTHORITY TO SIGN THE CORPORATION'S INSTRUMENT.
 52) I HAVE THE AUTHORITY TO SIGN THE CORPORATION'S INSTRUMENT.
 53) I HAVE THE AUTHORITY TO SIGN THE CORPORATION'S INSTRUMENT.
 54) I HAVE THE AUTHORITY TO SIGN THE CORPORATION'S INSTRUMENT.
 55) I HAVE THE AUTHORITY TO SIGN THE CORPORATION'S INSTRUMENT.
 56) I HAVE THE AUTHORITY TO SIGN THE CORPORATION'S INSTRUMENT.

SURVEYOR'S CERTIFICATE
 I, THE SURVEYOR, HAVE EXAMINED THE INSTRUMENT AND THE PLAN AND AM SATISFIED THAT THE INSTRUMENT ACCURATELY REPRESENTS THE LAND TITLES ACT AND THE INSTRUMENT WAS COMPLETED ON THE DATE OF REGISTRATION.

APPROVAL AUTHORITY CERTIFICATE
 THIS PLAN OF SUBDIVISION IS APPROVED BY THE COUNTY OF WINDSOR ON THIS DATE OF REGISTRATION.

REGISTRY CONTROL POINTS (RCP) 1, 2, 3, 4, 5, 6, 7, 8, 9, 10, 11, 12, 13, 14, 15, 16, 17, 18, 19, 20, 21, 22, 23, 24, 25, 26, 27, 28, 29, 30, 31, 32, 33, 34, 35, 36, 37, 38, 39, 40, 41, 42, 43, 44, 45, 46, 47, 48, 49, 50, 51, 52, 53, 54, 55, 56, 57, 58, 59, 60, 61, 62, 63, 64, 65, 66, 67, 68, 69, 70, 71, 72, 73, 74, 75, 76, 77, 78, 79, 80, 81, 82, 83, 84, 85, 86, 87, 88, 89, 90, 91, 92, 93, 94, 95, 96, 97, 98, 99, 100	4752544.540	450021.883
REGISTRY CONTROL POINTS (RCP) 1, 2, 3, 4, 5, 6, 7, 8, 9, 10, 11, 12, 13, 14, 15, 16, 17, 18, 19, 20, 21, 22, 23, 24, 25, 26, 27, 28, 29, 30, 31, 32, 33, 34, 35, 36, 37, 38, 39, 40, 41, 42, 43, 44, 45, 46, 47, 48, 49, 50, 51, 52, 53, 54, 55, 56, 57, 58, 59, 60, 61, 62, 63, 64, 65, 66, 67, 68, 69, 70, 71, 72, 73, 74, 75, 76, 77, 78, 79, 80, 81, 82, 83, 84, 85, 86, 87, 88, 89, 90, 91, 92, 93, 94, 95, 96, 97, 98, 99, 100	4752544.540	450021.883
REGISTRY CONTROL POINTS (RCP) 1, 2, 3, 4, 5, 6, 7, 8, 9, 10, 11, 12, 13, 14, 15, 16, 17, 18, 19, 20, 21, 22, 23, 24, 25, 26, 27, 28, 29, 30, 31, 32, 33, 34, 35, 36, 37, 38, 39, 40, 41, 42, 43, 44, 45, 46, 47, 48, 49, 50, 51, 52, 53, 54, 55, 56, 57, 58, 59, 60, 61, 62, 63, 64, 65, 66, 67, 68, 69, 70, 71, 72, 73, 74, 75, 76, 77, 78, 79, 80, 81, 82, 83, 84, 85, 86, 87, 88, 89, 90, 91, 92, 93, 94, 95, 96, 97, 98, 99, 100	4752544.540	450021.883

APPROVAL AUTHORITY CERTIFICATE
 THIS PLAN OF SUBDIVISION IS APPROVED BY THE COUNTY OF WINDSOR ON THIS DATE OF REGISTRATION.

MTE
 M.T.E. LTD.
 1221 ST. JAMES ST. W.
 LONDON, ONTARIO, N6A 3A1
 TEL: 519-324-8510