

ALL SIDEWALK RAMPS SHALL HAVE TACTILE PLATES AS PER OPSD 310.030
ALL CURB 600.060 UNLESS SHOWN OTHERWISE.

SEDIMENT CONTROL NOTES (REFER TO SHEET 13)

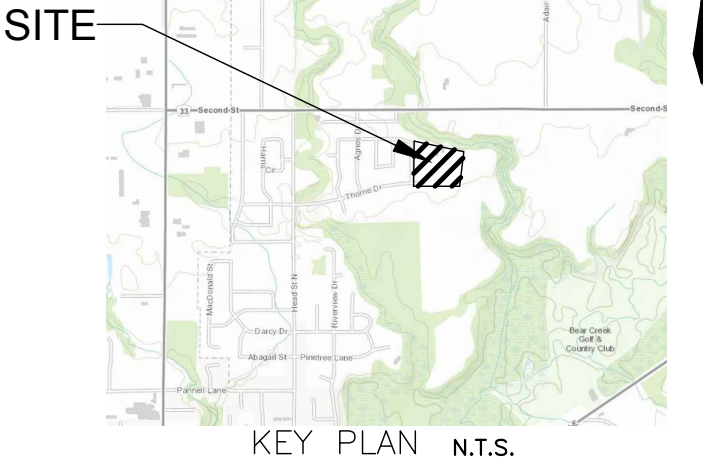
- 1. PROTECT ALL EXPOSED SURFACES AND CONTROL ALL RUNOFF DURING CONSTRUCTION.
2. ALL EROSION CONTROL MEASURES ARE TO BE IN PLACE BEFORE STARTING CONSTRUCTION AND REMAIN IN PLACE UNTIL RESTORATION IS COMPLETE.
3. MAINTAIN EROSION CONTROL MEASURES DURING ALL PHASES OF CONSTRUCTION.
4. ALL COLLECTED SEDIMENT IS TO BE DISPOSED OF AT AN APPROVED LOCATION.
5. MINIMIZE AREA DISTURBED DURING CONSTRUCTION.
6. ALL DEWATERING TO BE DISPOSED OF IN AN APPROVED SEDIMENT BASIN.
7. PROTECT ALL MANHOLES AND PIPE ENDS FROM SEDIMENT INTRUSION WITH TERRAFAX 270R GEOTEXTILE.
8. ALL CATCHBASINS ARE REQUIRED TO BE PROTECTED BY SILT SACKS DURING CONSTRUCTION.
9. KEEP ALL SUMPS CLEAN DURING CONSTRUCTION. PREVENT WIND BLOWN DUST.
10. STRAW BALES ARE TO BE USED IN LOCALIZED AREAS AS DIRECTED BY THE ENGINEER DURING CONSTRUCTION.
11. WHEN ALL RESTORATION IS COMPLETED REMOVE SEDIMENT CONTROL MEASURES AND RESTORE IMPACTED AREAS.
12. ALL OF THE ABOVE NOTES AND SEDIMENT AND EROSION CONTROL MEASURES AND ANY ADDITIONAL SEDIMENT & EROSION CONTROL MEASURES ARE TO BE IN ACCORDANCE WITH THE MINISTRY OF NATURAL RESOURCES GUIDELINES ON EROSION AND SEDIMENT CONTROL FOR URBAN CONSTRUCTION SITES.
13. PROTECT ALL RYCBMH'S TO HAVE STRAW BALES AS DETAILED.
15. STRAW BALES TO BE TERMINATED BY ROUNDING BALES TO CONTAIN AND FILTER RUNOFF.
16. ALL SILT FENCING AND DETAILS ARE AT THE MINIMUM TO BE CONSTRUCTED IN ACCORDANCE WITH THE MNR 'GUIDELINES ON EROSION AND SEDIMENT CONTROL FOR URBAN CONSTRUCTION SITES'.

WALKWAY TO BE CONSTRUCTED IN ACCORDANCE WITH STRATHROY-CARADOC'S WALKWAY DETAIL DRAWING SCSD-9

LOT GRADING NOTES

- 1. EXISTING DRAINAGE FROM ABUTTING LANDS IS NOT TO BE DISTURBED.
2. BASEMENT OPENINGS TO BE A MINIMUM OF 300mm ABOVE THE CENTERLINE OF THE ROAD UNLESS OTHERWISE APPROVED BY THE MUNICIPAL ENGINEER.
3. GROUND ELEVATIONS AT HOUSES ABUTTING OVERLAND FLOW ROUTES ARE TO BE 225mm ABOVE OVERLAND FLOW ROUTE ELEVATIONS.
4. SUMP PUMP DISCHARGE TO BE DIRECTED TO THE STORM SEWERS VIA THE STORM PDC.
5. RETAINING WALLS, 1m HIGH OR GREATER ARE TO BE DESIGNED AND CONSTRUCTED TO THE SPECIFICATIONS OF A REGISTERED ENGINEER IN ACCORDANCE WITH ONTARIO BUILDING CODE.
6. MINIMUM 2% GRADE ON ALL GRASS SURFACES.
7. ROOF LEADERS SHALL DISCHARGE TO GRASS AREAS.
8. GEOTECHNICAL ENGINEER SHALL APPROVE FILL MATERIAL IN ALL AREAS WHERE THE DEPTH OF FILL > 1.0m.
9. CERTIFIED GRADING CERTIFICATES SHALL BE COMPLETED FOR EACH LOT.
10. OPENINGS IN ANY BUILDINGS ON THE SIDE ADJACENT TO AN OVERLAND FLOW ROUTE ARE TO BE A MINIMUM OF 450mm ABOVE THE OVERLAND FLOW ROUTE ELEVATION.
11. LOCALIZED SURFACE DRAINAGE FROM ABUTTING PROPERTIES TO BE DEVELOPED IN FUTURE MAY BE DISCHARGED ONTO THE PROPOSED LOTS IN THE SUBDIVISION.

MUNICIPALITY OF STRATHROY-CARADOC

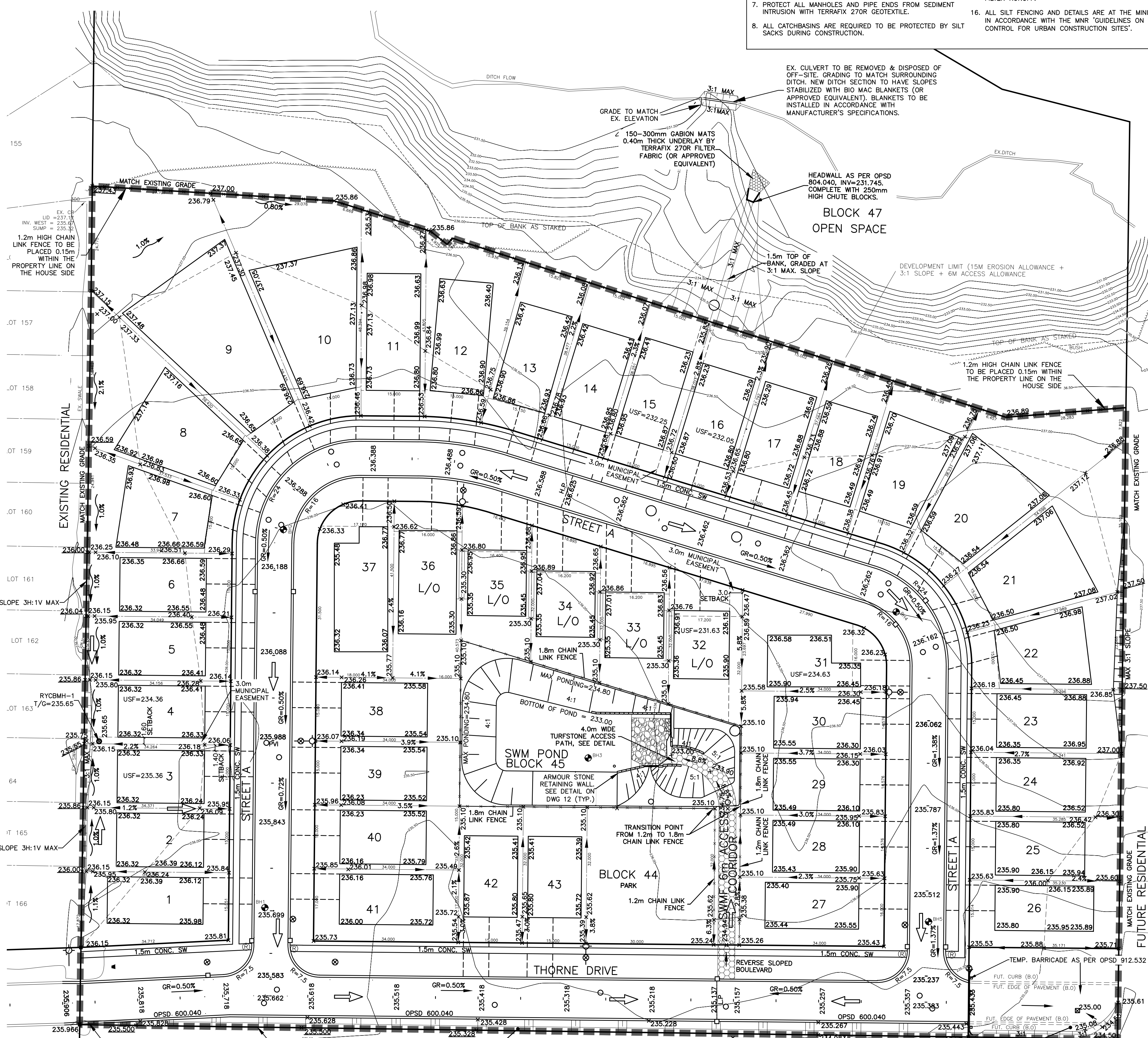


GEODETIC BM ELEV. =230.002m
Township: STRATHROY MOFFETT & POWEL LUMBER SUPPLIES OFFICE BUILDING, SOUTH SIDE OF COUNTY ROAD NO. 39, 1.0 KM WEST OF INTERSECTION OF HIGHWAY NO. 81, TABLET IN SOUTH SIDE OF CONCRETE FOUNDATION, 23 CM FROM SOUTHEAST CORNER, 90 CM BELOW WOOD SIDING, AT ROAD LEVEL.
SITE BENCHMARK ELEV. =235.970m
SB AT THE SOUTH WEST CORNER OF BLOCK 48

NOTE TO CONTRACTOR :
DO NOT SCALE DRAWINGS.
CONTRACTORS MUST CHECK AND VERIFY ALL DIMENSIONS AND REPORT ANY DISCREPANCIES TO THE ENGINEER BEFORE PROCEEDING WITH THE WORK.

ALL DRAWINGS REMAIN THE PROPERTY OF THE ENGINEER AND SHALL NOT BE REPRODUCED OR REUSED WITHOUT THE ENGINEER'S WRITTEN PERMISSION.

THE OWNER/ARCHITECT/CONTRACTOR IS ADVISED THAT M.T.E. CONSULTANTS INC. CANNOT CERTIFY ANY COMPONENT OF THE SITE WORKS NOT INSPECTED DURING CONSTRUCTION. IT IS THE RESPONSIBILITY OF THE GENERAL CONTRACTOR TO NOTIFY M.T.E. CONSULTANTS INC. PRIOR TO COMMENCEMENT OF CONSTRUCTION TO ARRANGE FOR INSPECTION.



LEGEND
55 DENOTES REGISTERED PLAN LOT NUMBER
LIMIT OF CONSTRUCTION
LOT FLOW (MIN. 2.0%) / MINOR FLOW
EXISTING LOT FLOW
SIDEWALK RAMP
RYCBMH/CB
SWALE (150mm DEEP TYPICAL)
EX. SWALE
3:1 MAX SLOPE (OR LISTED OTHERWISE)
PROPOSED GRADE
GRADE TO MATCH EXISTING
EXISTING SPOT ELEVATIONS
EXISTING CONTOUR & ELEVATION
SPLIT/BREAK POINT OF GRADING
1.8m CHAIN LINK FENCE
1.2m CHAIN LINK FENCE
COMMUNITY MAILBOX LOCATION
HOUSE WITH WALKOUT TYPE
HOUSE WITH LOOKOUT TYPE
LIGHT STANDARD
PROPOSED TRANSFORMER
PROPOSED JUNCTION BOX

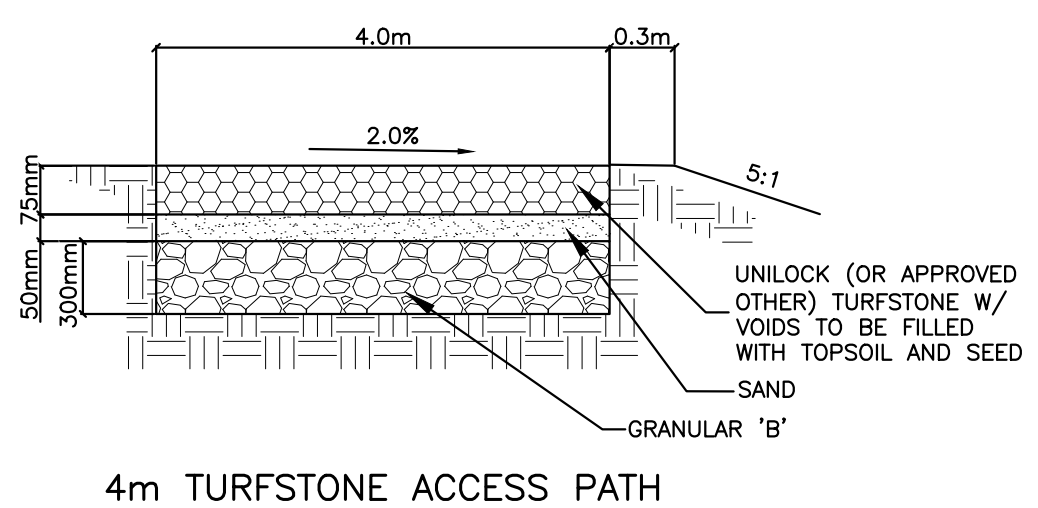
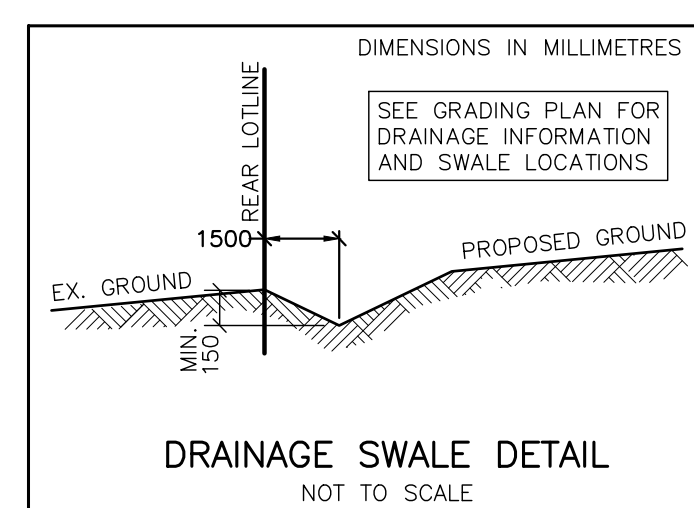


Table with 3 columns: No., REVISION, BY, DATE. Includes entries for construction issues, updated notes, and revisions.

MTE Engineers, Scientists, Surveyors
519-204-6510 www.mte85.com

OWNER
2634876 ONTARIO INC.
PROJECT
CREEKSIDE MEADOWS
DRAWING
LOT GRADING PLAN

Table with 2 columns: Field, Value. Includes Project Manager (R. LUCAS), Design By (RC), Drawn By (JAC), Surveyed By, Date (Aug.10/21), Scale (1:500), Project No. (42025-104), Checked By (JMM), Drawing No. (6), and Sheet of.